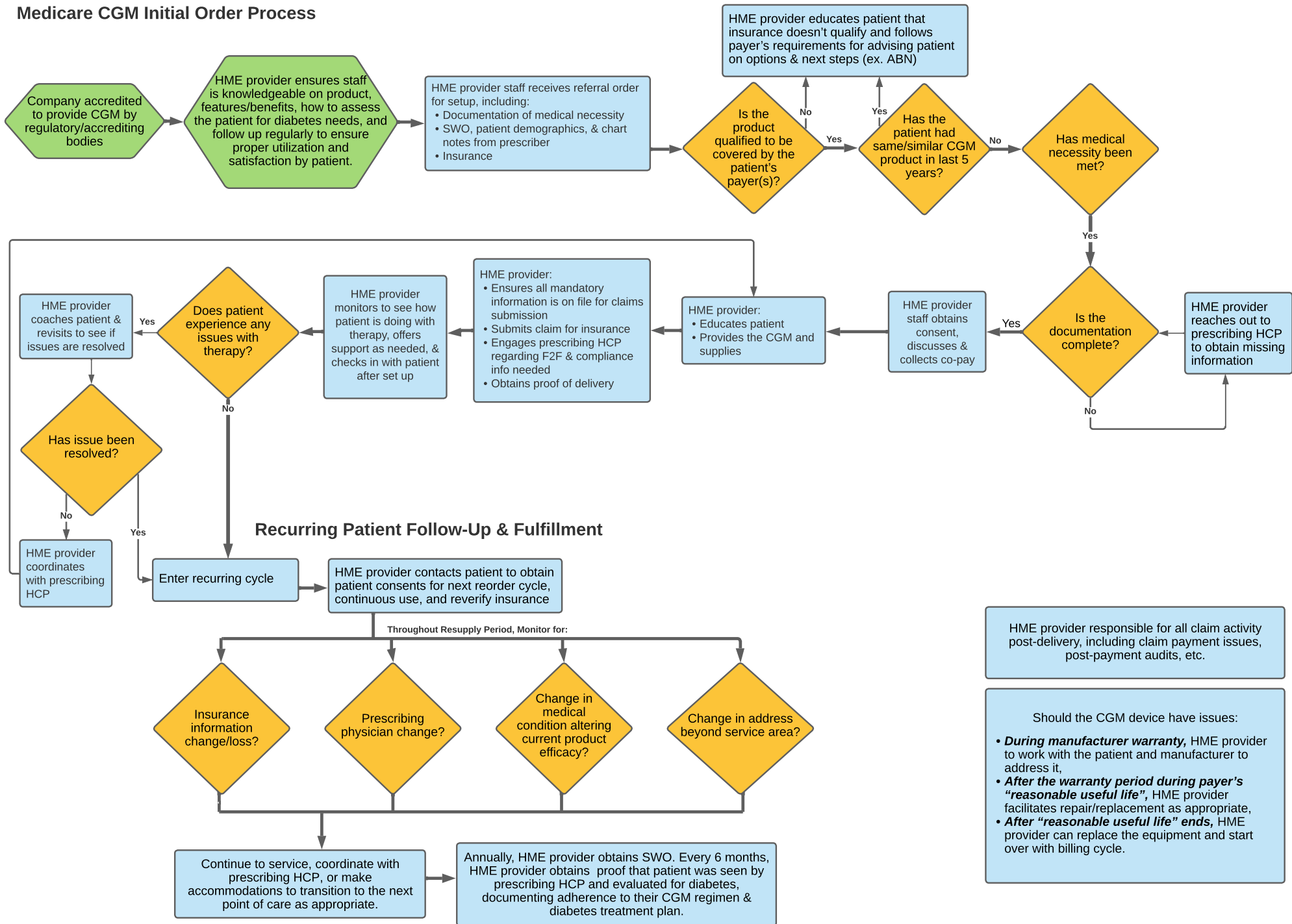


Medicare CGM Initial Order Process



HME provider responsible for all claim activity post-delivery, including claim payment issues, post-payment audits, etc.

Should the CGM device have issues:

- **During manufacturer warranty**, HME provider to work with the patient and manufacturer to address it,
- **After the warranty period during payer's "reasonable useful life"**, HME provider facilitates repair/replacement as appropriate,
- **After "reasonable useful life" ends**, HME provider can replace the equipment and start over with billing cycle.



SWO = Standard Written Order
HCP = Health Care Practitioner
ABN = Advanced Beneficiary Notice